

STARR KING FELLOWSHIP

FINANCIAL INFORMATION

FEBRUARY, 2023

Approximately 85% of Starr King's operating expenses are funded by our pledges. *This means that each of us holds an important stake in support and decision making. It also means that our pledging is a measure of our gratitude for all the services we receive from the Fellowship.*

How much should I pledge?

Your pledge should be a thoughtful contribution that supports our mission and reflects the role the Fellowship plays in your life and in the wider community. The suggested pledge guide from the Unitarian Universalist Association on the last page may help.

The budget for the Fellowship this coming year will be impacted by inflation, other increases, and the loss of rental income. Inflation has become a significant matter for the financing of our Fellowship, and so we hope that all of you who are able to do so, consider increasing your pledge amount from last year.

Please know that your pledge, at whatever level you can afford, is greatly appreciated.

What if my financial circumstances change during the year?

Know that we realize that lives are not static and that your pledge may need to be adjusted; just inform our Treasurer, Janet Englund.

What if I have questions about my pledge amount or need more financial information?

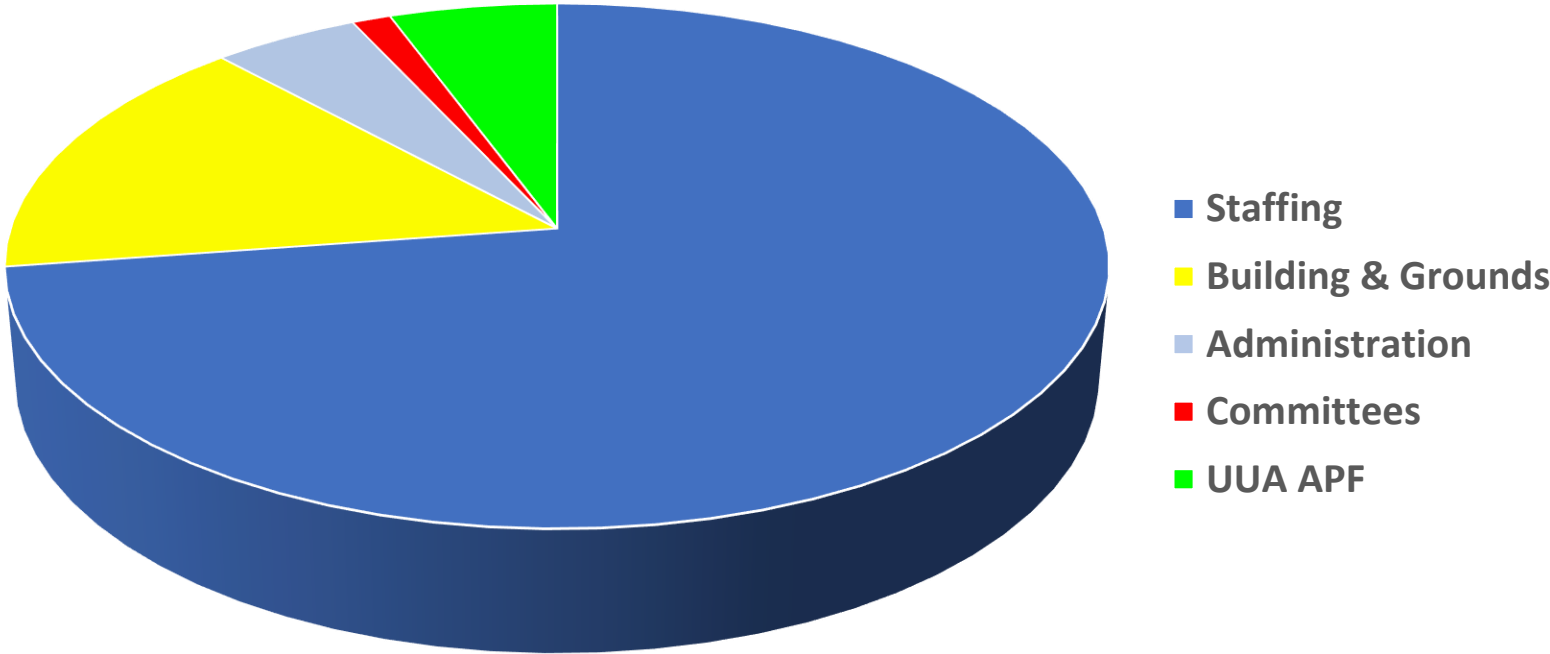
Ask Nancy Chaddock, a member of the Stewardship and Finance Committees

Completed commitment forms may be submitted online at our website: starrkingfellowship.org or you may request a written form from the Office for the mailing of your pledge to Starr King UU Fellowship, Box 337, Plymouth, NH 03264.

At Starr King Fellowship we cultivate more love in the world and nurture more love for the world

Current Budgeted Expense \$214,763

Year Ending June 30, 2023



86% of the above budgeted expenses were covered by those who pledged!

Suggested Fair Share Contribution Guide from the UUA

Adjusted Monthly Income	Approx. Adjusted Annual Income	Supporter 2-6% of Income		Sustainer 3-7% of Income		Visionary 5-9% of Income	
		Suggested % of Income	Monthly Pledge	Suggested % of Income	Monthly Pledge	Suggested % of Income	Monthly Pledge
\$1,000	\$12,000	2%	\$20	3%	\$30	5%	\$50
\$1,500	\$18,000	2%	\$30	3%	\$45	5%	\$75
\$2,000	\$25,000	2%	\$40	3%	\$60	5%	\$100
\$3,000	\$36,000	2%	\$60	3%	\$90	5%	\$150
\$4,000	\$50,000	3%	\$120	4%	\$160	5%	\$200
\$6,500	\$80,000	3%	\$195	4%	\$260	6%	\$390
\$8,500	\$100,000	3%	\$255	5%	\$425	6%	\$510
\$10,000	\$120,000	3%	\$300	5%	\$500	6%	\$600
\$12,500	\$150,000	4%	\$500	5%	\$625	6%	\$750
\$17,000	\$200,000	4%	\$680	6%	\$1,020	7%	\$1,190

Please consider what is possible and meaningful for you